

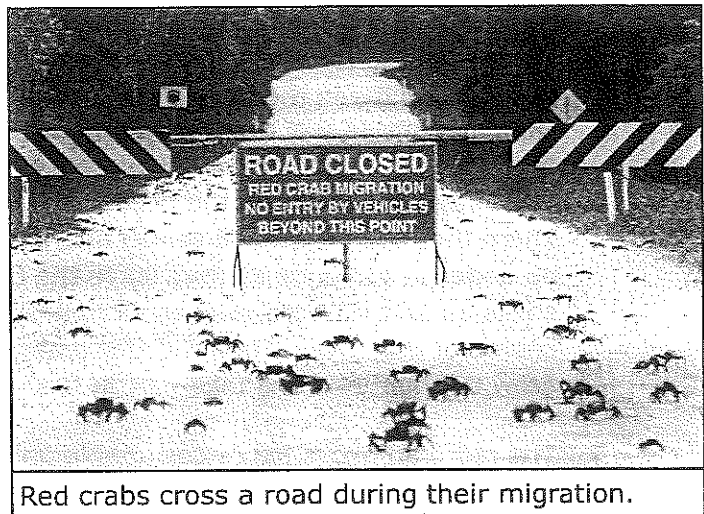
STAAR Practice

Read the next two selections. Then choose the best answer to each question.

Red Crab Invasion

- 1 Christmas Island is an Australian territory in the Indian Ocean. The island is actually a plateau at the top of a mountain that is mostly underwater. Only 1,500 or so people lived on the island as of 2010. But Christmas Island is a special place.
- 2 The island boasts an array of exotic plants and animals, some of which are found nowhere else in the world. Among this great diversity are more than 100 kinds of crabs. The red land crab makes up the largest population of the land crab species. These crabs spend most of their lives on land; however, once a year almost 120 million of them are driven by instinct to make a treacherous trip to the ocean. The crabs let nothing stand in their way, swarming in red waves over the streets and homes of the island.
- 3 The migration begins during the rainy season in October and November. The process can last as long as a few weeks, and the crabs can travel several miles to the ocean and back. They travel a nearly identical path year after year. During that journey they risk getting run over by cars, suffering dehydration, or being attacked by other animals. But the crabs will navigate over or around anything in their path.

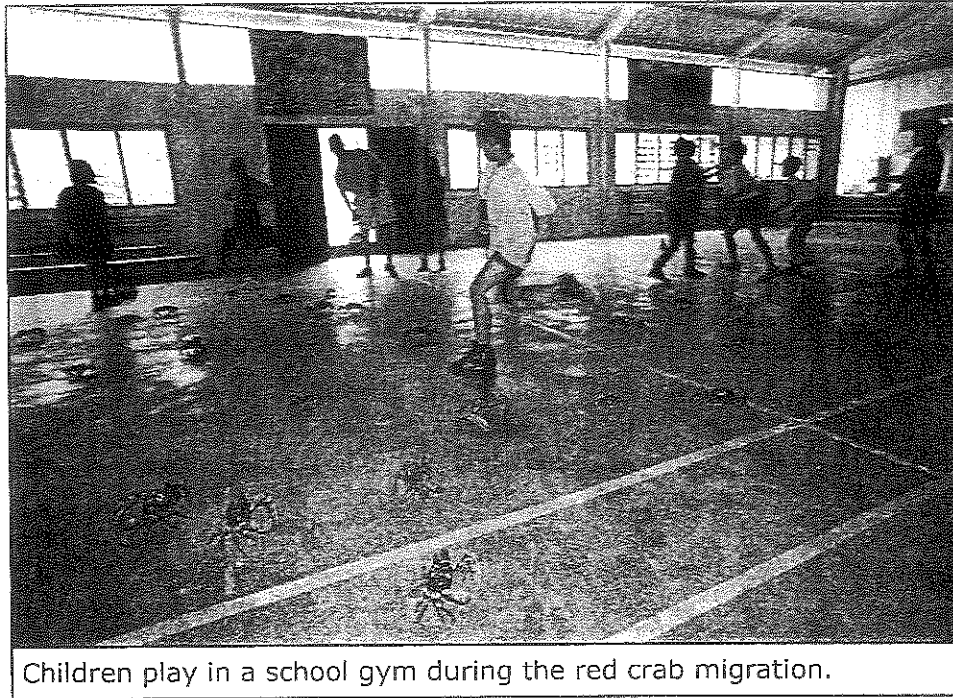
- 4 The male red crabs are the first to begin the journey. They leave their burrows in the rain forest near the peak of the plateau and scurry toward the ocean. At the beginning of this migration, it appears as though the mountain is erupting with crabs. The crabs make their way down the side of the plateau and cross the path of the people living there. The roads become crab-crossing zones, with traffic halting frequently while the small



Red crabs cross a road during their migration.

© Minden Pictures/SuperStock

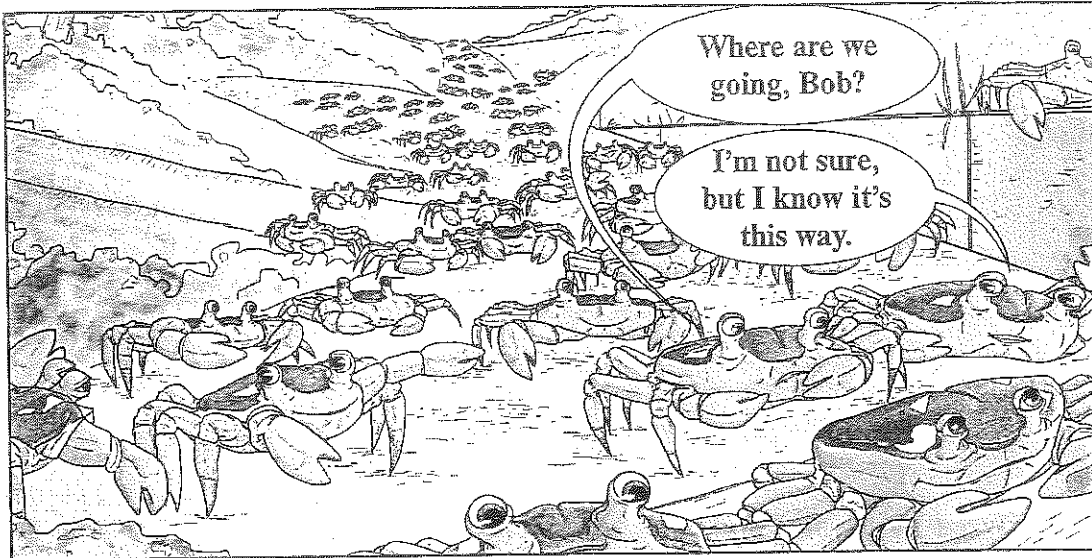
crustaceans race toward the beach. Homes in the crabs' path can become overrun with the little red creatures. And schools on the island experience the spectacle of thousands of crabs scuttling over walls and through hallways and classrooms as they try to reach their destination.



Jurgen Freund

Children play in a school gym during the red crab migration.

- 5 Soon after the males begin their descent, the female crabs join them. The females take a similar path to the ocean. Then the males and females mate near the water. After mating, the males return to higher ground, but the females wait by the shore to lay their eggs. After almost two weeks, the females make their way to the edge of the ocean, where they release their eggs. Each female red crab can produce up to 100,000 eggs. The female crabs then travel back to their burrows in the forest, leaving their eggs unprotected. This might be the most dangerous time in the breeding cycle for the species. Predators prowl the shoreline during this time, awaiting a tasty meal of crab eggs.
- 6 The baby crabs hatch in the ocean and live their first few weeks in the water. There they are vulnerable to fish and birds. Many do not survive, but those that do undergo a change as they leave the ocean. They shed the outer layer of their shells as part of a process called molting, which they do many times over the course of their lives. Then the tiny crabs travel to the forest where they will grow to adulthood and take part in the next migration.
- 7 The red crab migration forces people on the island to make some accommodations for the crustaceans. Roads are closed, and the routes of the crabs are reported on the radio. The annual migration has become a part of life for the locals. Also it is a way for the remote island to attract visitors. Many tourists travel to Christmas Island to witness the red crab migration, boosting the local economy. For visitors and residents alike, the sights and sounds of millions of crabs scrambling over land provide a fascinating experience.



Monarch Magic

I watch with awe as you spring
Free from the prison you enclosed yourself in;
Cracking the capsule of crystal that captures
Your beautiful body and budding wings.
5 You push through, and nature sings.

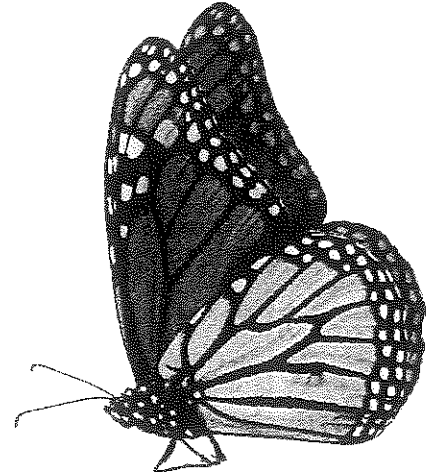
Like sails catching a sudden gust
Those frail folded flaps unfurl;
The sun toasts them dry of their newborn dew.
They shimmer brightly in a new world;
10 White dots and black stripes on rust.

Before long you enjoy freedom won,
Vitalized with rest from tiresome struggle
You leave behind your chrysalis husk
That kept you safely wrapped in a bundle
15 And race toward the distant sun.

I know just where you will go,
As you ride the breeze to the horizon.
You will meet millions and travel south
In an orange blanket that smothers the sky
20 Destined to find home in Mexico.

You will soon rob this land of your grace
And leave it dull as pale elephant skin
For many months of biting wintry weather
While you dance in warm sun rays
25 Spreading your magic in that new place.

But someday I will meet your kin
That will bring beauty back to my tree,
Sipping sweet nectar from its new blossoms
And hanging crystalline ornaments
30 Like this one clung to its limb.



Use "Red Crab Invasion" to answer questions 1-6. Then fill in the answers on your answer document.

1. Which idea is best expressed in the cartoon at the end of the selection?

- F Red crabs shed their shells many times during their life.
- G More than 100 crab species live on Christmas Island.
- H Red crabs rely on their instincts during their migration.
- J Female red crabs can produce as many as 100,000 eggs.

2. Read the origin of the word navigate.

from Latin *navis* (ship) + *agere* (drive)

This information helps the reader understand that navigate in paragraph 3 means —

- A overcome problems
- B accomplish a difficult goal
- C desire a leading role
- D find the way to a destination

3. The author included paragraph 1 in the selection most likely to —

- F provide background information about the home of the red crabs
- G explain why it is important for the red crabs to reach the ocean
- H provide reasons for visiting Christmas Island during the red crab migration
- J explain why Christmas Island is a perfect place for red crabs to live

4. Which sentence from the selection supports the idea that Christmas Island is a special place?
- A *The red land crab makes up the largest population of the land crab species.*
 - B *The island boasts an array of exotic plants and animals, some of which are found nowhere else in the world.*
 - C *Only 1,500 or so people lived on the island as of 2010.*
 - D *Christmas Island is an Australian territory in the Indian Ocean.*
-

5. In paragraph 2, the word treacherous means —
- F quick
 - G unexpected
 - H dangerous
 - J questionable
-

6. Which detail from the selection supports the idea that the island benefits from the red crabs?
- A Millions of red crabs live in the rain forest that grows on the island.
 - B The red crabs lay their eggs along the shore of the island.
 - C The red crab migration attracts many visitors who spend money on the island.
 - D The red crabs cover roadways during their migration.

Use "Monarch Magic" (p. 15) to answer questions 7-10. Then fill in the answers on your answer document.

7. Read lines 6 and 7 from the poem.

Like sails catching a sudden gust
Those frail folded flaps unfurl;

The poet uses the simile in these lines to describe —

- F the damage the wind has done to the butterfly's wings
- G the quickness and fullness of the butterfly's spreading wings
- H the colors of the butterfly's new wings
- J the size of the butterfly's wings compared to a ship's sails

8. The poet includes stanzas 1 through 3 most likely to —

- A describe the actions of the butterfly as a beautiful event
- B highlight the speaker's memories of observing the butterfly
- C emphasize the effect the butterfly has on its surroundings
- D show that the speaker is watching more than one butterfly

9. Which lines from the poem best express the speaker's anticipation of a future event?

- F Cracking the capsule of crystal that captures
Your beautiful body and budding wings.
- G But someday I will meet your kin
That will bring beauty back to my tree,
- H You leave behind your chrysalis husk
That kept you safely wrapped in a bundle
- J They shimmer brightly in a new world;
White dots and black stripes on rust.

10. Why does the poet include a simile in line 22?

- A To emphasize the delicateness of the butterflies
- B To identify another animal that inhabits the area
- C To describe how the butterflies become less attractive over time
- D To express the idea that the area will be less beautiful without the butterflies

Use "Red Crab Invasion" and "Monarch Magic" to answer questions 11-14.
Then fill in the answers on your answer document.

11. An important difference between the migrations mentioned in "Red Crab Invasion" and "Monarch Magic" is that only the butterflies —

- F breed during their journey
- G migrate to escape harsh weather
- H are seen by people while migrating
- J travel in a group

12. Read these lines from "Monarch Magic."

You will meet millions and travel south
In an orange blanket that smothers the sky

Which sentence from "Red Crab Invasion" illustrates a similar idea?

- A *After mating, the males return to higher ground, but the females wait by the shore to lay their eggs.*
 - B *During that journey they risk getting run over by cars, suffering dehydration, or being attacked by other animals.*
 - C *At the beginning of this migration, it appears as though the mountain is erupting with crabs.*
 - D *Among this great diversity are more than 100 kinds of crabs.*
-

13. Which organizational pattern do the author and the poet use to describe the migration of an organism?

- F The events of the migration are presented in sequential order.
 - G The events of the migration are ordered from most important to least important.
 - H Problems that the organism encounters during the migration are listed, and then solutions are given.
 - J Opinions about the organism are presented, and then these opinions are supported by factual information.
-

14. How are the migrations described in "Red Crab Invasion" and "Monarch Magic" similar?

- A Both migrations are initiated by the male of the species.
- B Both migrations cross a border into another country.
- C Both migrations occur during a rainy season.
- D Both migrations are part of a cycle.

Enter your answers in Google Classroom.